

# IPC6325-WD-VF

## 2MP WDR Vandal-Proof Network Dome Camera



Indoor

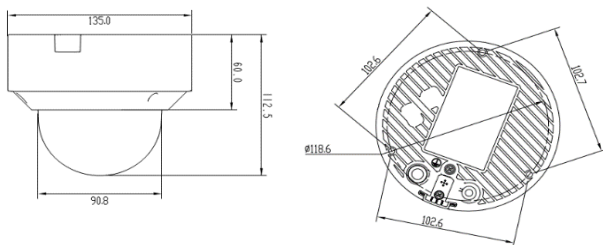


### Features

- H.265, H.264 and MJPEG video compression standard
- Wide dynamic range 120dB
- Intelligent analytics
- IK10 Vandal-proof class
- Railway application standards
- DC/AC supply can be hot standby for PoE
- Ultra wide operating voltage range up to  $\pm 25\%$
- Ultra wide operating temperature range:  $-30\sim 60^{\circ}\text{C}$

### Dimension

Unit: mm



### Optional Accessories



Pendant-mount bracket  
DTS-08C



Wall-mount bracket  
DTS-09C

### Specifications

Model Item	IPC6325-WD-VF
<b>Camera</b>	
Image sensor	1/2.7" 2.0 megapixel progressive scan CMOS
Effective pixels	1920(H)×1080(V)
Min. Illumination	Color: 0.01lux (F1.4, AGC ON) B/W : 0.004lux (F1.4, AGC ON)
Day/Night mode	Auto/Color/Monochrome(removable infrared-cut filter)
Electronic shutter speed	1/100000s to 1s
White balance	Auto/Auto-Track/Manual//OnePush
Gain control	Automatic / manual
Wide Dynamic Range	120dB (Physical WDR on)
Backlight compensation	Supported
Digital noise reduction	Self-adaptive to 2D or 3D DNR
Defog	Automatic / Manual
<b>Lens</b>	
Focal Length(Zoom Ratio)	2.8-12 mm (4.3x) manual varifocal, F1.4(max)
Focus	Acousto-optic assisted manual focus
Angular Field of View	Horizontal: 106°(Wide) ~ 36°(Tele) / Vertical: 57°(Wide) ~ 20°(Tele)
Auto Iris	DC-Iris
Camera angle adjustment	Pan: 0°~356°,Tilt: 0°~75°,Rotation: 0°~ 356°
<b>Function</b>	
Video compression	H.265 / H.264 / MJPEG
Max. Resolution	1920×1080
Frame rate	60Hz:30/20~1fps / 50Hz:25/20~1fps
Multiple streaming	Double Full HD(1080p) streams, Treble streams (30fps or 25fps)
Stream packages	Four predefined packages(High quality, Balanced, Low bandwidth, and Mobile devices) and four customized packages
ISP packages	Five predefined typical scenarios(Outdoor, Indoor, Motion capture, Low-light, and Backlight mode) and eight user-defined scenarios.
Audio compression	G.711a/G.711u/G.726/OPUS
PU access protocol	ONVIF Profile S/G,GB/T 28181-2014, Genetec Protocol v1.00 and HUAWEI SDK(private protocol)
Network protocol	TCP , UDP , IPv4 , IPv6 , DHCP , DHCPv6 , DNS , ICMP , ICMPv6 , IGMP , HTTPS , FTP , SFTP , RTP , RTSP , RTCP , SIP , ARP , SSL , NTP , SNMP ( V1/V2/V3 ) , 802.1x , QoS , DDNS
Stream transmission	Unicast / multicast
Security mode	User name and password authentication, 802.1x (MD5 Challenge), and HTTPS digital certificate, IP address filtering
Stream encryption	AES128/192/256 encryption algorithm, and Digital Watermark
Intelligent Analytics	Tripwire detection, Loitering detection, Intrusion detection, Abandoned object detection, Removed object detection, Target color recognition, Humans and vehicles distinguish
Intelligent detections	Face detection, Motion detection, Tampering detection
Alarm actions	Alarm output, SD card recording, and Snapshot.
<b>Interface</b>	
Ethernet interface	1x RJ-45 10/100Base-T self-adaptive Ethernet port
Serial interface	1x RS-485 port
Alarm interface	1-channel alarm input and 1-channel alarm output
Analog video interface	1-channel CVBS output ,BNC connector
Audio interface	1-channel audio input and 1-channel audio port (3.5mm mono connector)
Memory card slot	1x MicroSD/SDHC/SDXC slot supporting memory card up to 64 GB
<b>General Parameter</b>	
Power supply	DC12V $\pm 25\%$ , DC24V $\pm 25\%$ , AC24V $\pm 25\%$ , PoE(IEEE 802.3at/af). DC supply polarity is self-adaptive, DC/AC supply can be hot standby for PoE.
Power consumption	Typ.4W , Max.4.8W
Operating environment	Operating temperature : $-30^{\circ}\text{C} \sim 60^{\circ}\text{C}$ Relative humidity: 5% to 95% (non-condensing)
Railway application	Complies with EN 50121-4 and EN 50125-3
Surge suppression	4kV surge voltage , complies with IEC 61000-4-5
IP protection class	IP66, complies with IEC 60529
Vandal-proof Class	IK10, complying with IEC 62262
Anti-corrosion	Satisfies 10 days salt spray test, complies with IEC60068-2-11
Net weight	1.0 kg
Gross weight	1.4 kg
Physical dimensions	$\varnothing 135 \times 112.5$ mm
Packing dimensions	260.0×195.0×148.0 mm